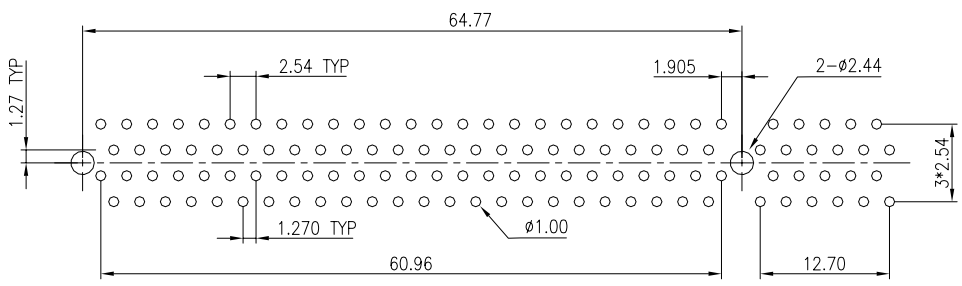
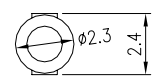


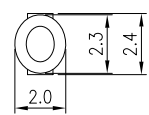
SECTION A-A



RECOMMENDED PCB LAYOUT (TOP VIEW)



SECTION B-B
SCALE 5 : 1



SECTION C-C
SCALE 5 : 1

MATERIAL
 INSULATOR: GLASS-REINFORCED THERMOPLASTIC.
 CONTACT: PHOSPHOR BRONZE.
 PLATING: MATING AREA - SEL. GOLD OVER NICKEL.
 SOLDER AREA - TIN/LEAD OVER NICKEL.

ELECTRICAL
 VOLTAGE RATING: 250 VAC RMS.
 CURRENT RATING: 1 AMP.
 DIELECTRIC WITHSTANDING VOLTAGE: 500 VAC RMS 60Hz FOR 1 MINUTE.
 INSULATION RESISTANCE: 1000 MEGOHMS MIN AT 500 VDC.
 CONTACT RESISTANCE: 30 MILLIOHMS MAX AT 1 AMP DC.

MECHANICAL
 RETENTION FORCE: 460 GRAMS MIN PER CONTACT.
 INSERTION FORCE: 230 GRAMS MAX PER CONTACT PAIR.
 WITHDRAWAL FORCE: 15 GRAMS MIN PER CONTACT PAIR.

ENVIRONMENTAL
 TEMPERATURE RANGE: -55°C TO +85°C.

| | | | | TOLERANCE | | Sullins Electronics Corp San Marcos, CA www.SullinsElectronics.com | | TITLE: PCI 120P CONN | | | | |
|-----|---------------------------|------|----------|-----------|--------|--|---------|----------------------|------------------|-------|--------|-----|
| | | | | LINEAR | ANGLES | | | PART NO. | TRWB060DKHN-T578 | | | |
| D | CHANGED #1 POS. INDICATOR | JFW | 12/23/03 | X.±0.20 | X'.± | APPD: | MAT'L: | DWG NO. | P12005004 | | | |
| C | Hole Dia to 2.44 | Nop | Aug-8-01 | .XX±0.10 | .XX'± | CHKD: | FINISH: | | UNITS | SCALE | SHEET | REV |
| REV | ECN NO. | NAME | DATE | .XXX±0.05 | .XXX'± | DRWN: Jason Deng | Q'TY: | | MM | 2 : 1 | 1 OF 1 | D |